

PBH NETWORK COUNCIL DASHBOARD REPORT FOR FY 2010/2011

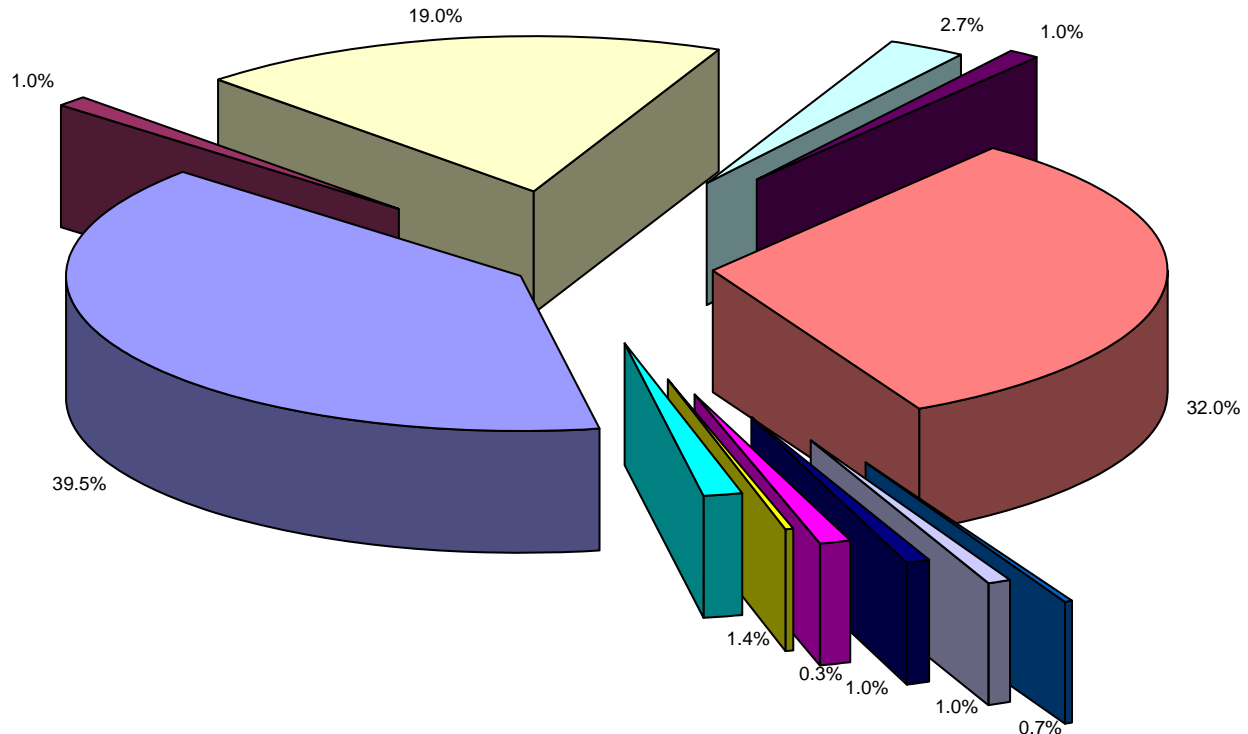
July 1 2010 - June 30, 2011

Network	(Report as of July 27, 2011)
----------------	------------------------------

The Number and Type of Providers Currently In the PBH Network

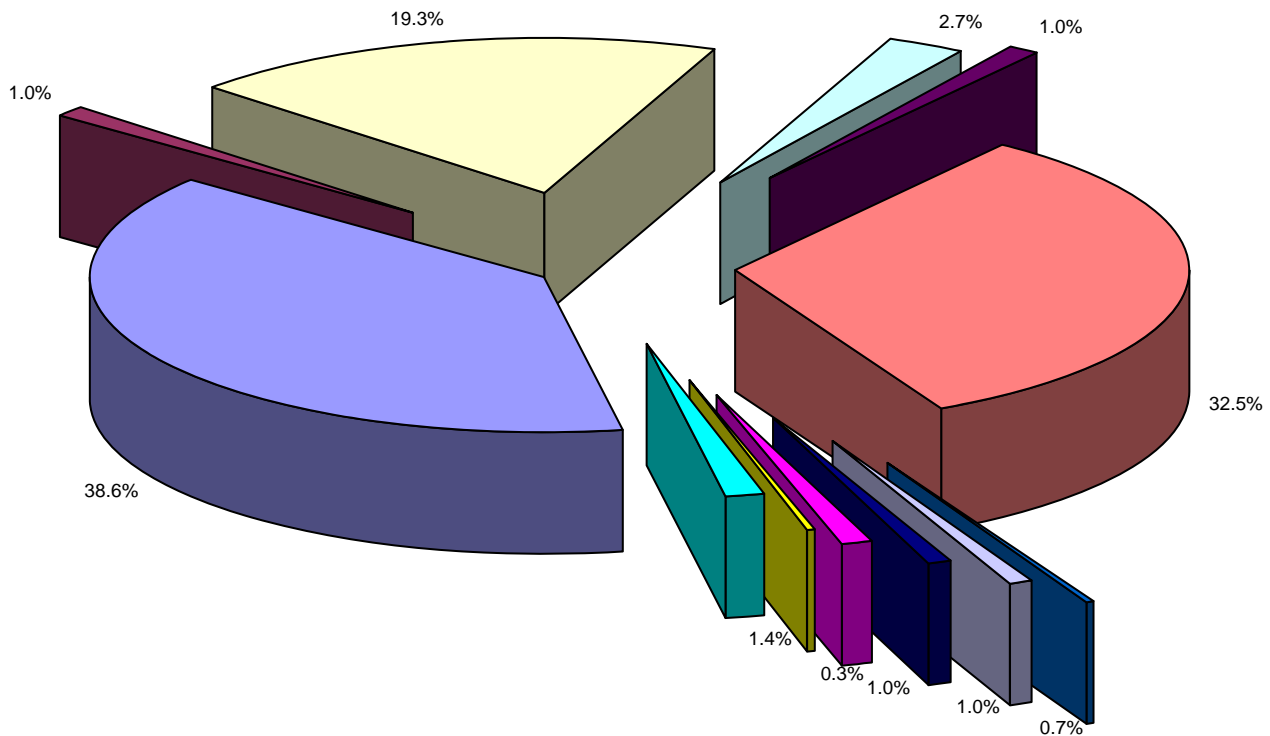
Entity Type	Population Type	2010		2011		Diff	Growth
		1st qtr	2nd qtr	3rd qtr	4th qtr		
Agency	DD Adult	67	66	66	65	-2	-3%
	DD Child	3	3	3	2	-1	-33%
	MH Adult	10	9	9	9	-1	-10%
	MH Child	30	30	29	29	-1	-3%
	SA Adult	6	6	6	6	0	0%
	Total		116	114	113	111	-5
Comprehensive Community Provider	DD Child	3	3	3	3	0	0%
	DD Adult	3	3	3	3	0	0%
	MH Child	3	3	3	3	0	0%
	MH Adult	3	3	3	3	0	0%
	SA Child	3	3	3	3	0	0%
	SA Adult	3	3	3	3	0	0%
	Total		3	3	3	3	0
Licensed Independent Practitioner Group	DD Adult	7	7	7	7	0	0%
	DD Child	2	2	2	2	0	0%
	MH Adult	38	39	41	42	4	11%
	MH Child	8	8	8	8	0	0%
	SA Adult	1	1	1	1	0	0%
	Total		56	57	59	60	4
Hospital Inpatient	DD Adult	4	4	4	4	0	0%
	DD Child	2	2	2	2	0	0%
	MH Adult	8	8	8	8	0	0%
	MH Child	4	4	4	4	0	0%
	Total		8	8	8	8	0
Hospital Outpatient	DD Adult	1	1	1	1	0	0%
	MH Adult	2	2	2	2	0	0%
	Total		3	3	3	3	0
Licensed Independent Practitioner	DD Adult	19	19	19	18	-1	-5%
	MH Adult	64	66	68	70	6	9%
	MH Child	11	11	11	11	0	0%
	Total		94	96	98	99	5
Local Management Entity	SA Adult	1	1	1	1	0	0%
Other	DD Adult	2	2	2	2	0	0%
ADATC State Institution	SA Adult	3	3	3	3	0	0%
ICFMR State Institution	DD Adult	3	3	3	3	0	0%
Neuro Behavioral State Institution	DD Adult	1	1	1	1	0	0%
Psych State Institution	MH Adult	4	4	4	4	0	0%
	MH Child	3	3	3	3	0	0%
	Total		4	4	4	4	0
Total Providers		294	295	298	298	4	1%
Total Number of Contracted Providers		283	284	287	287	4	1%

Percentage of Providers in the PBH Network by Provider Type for First Quarter



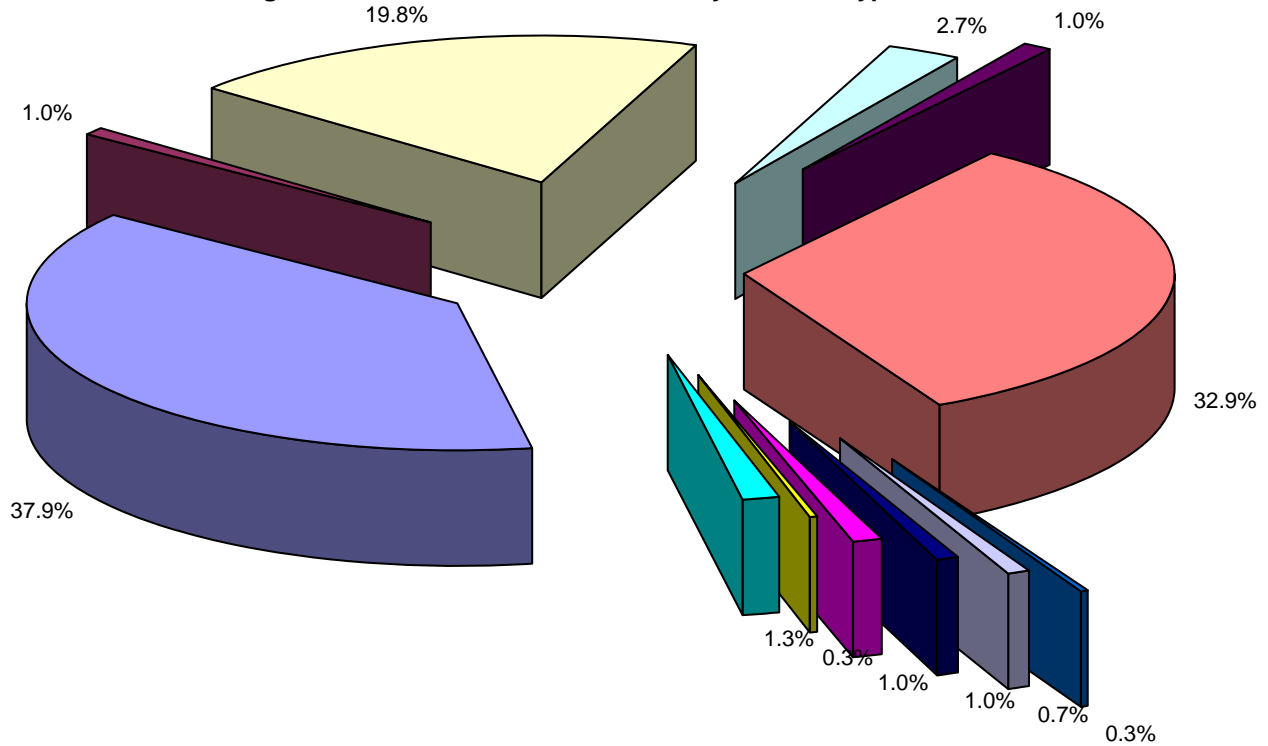
- | | | |
|-------------------------|---|---|
| Agency | Comprehensive Community Provider | Licensed Independent Practitioner Group |
| Hospital Inpatient | Hospital Outpatient | Licensed Independent Practitioner |
| Local Management Entity | Other | ADATC State Institution |
| ICFMR State Institution | Neuro Behavioral Center State Institution | Psychiatric State Institution (State Hospitals) |

Percentage of Providers in the PBH Network by Provider Type for Second Quarter



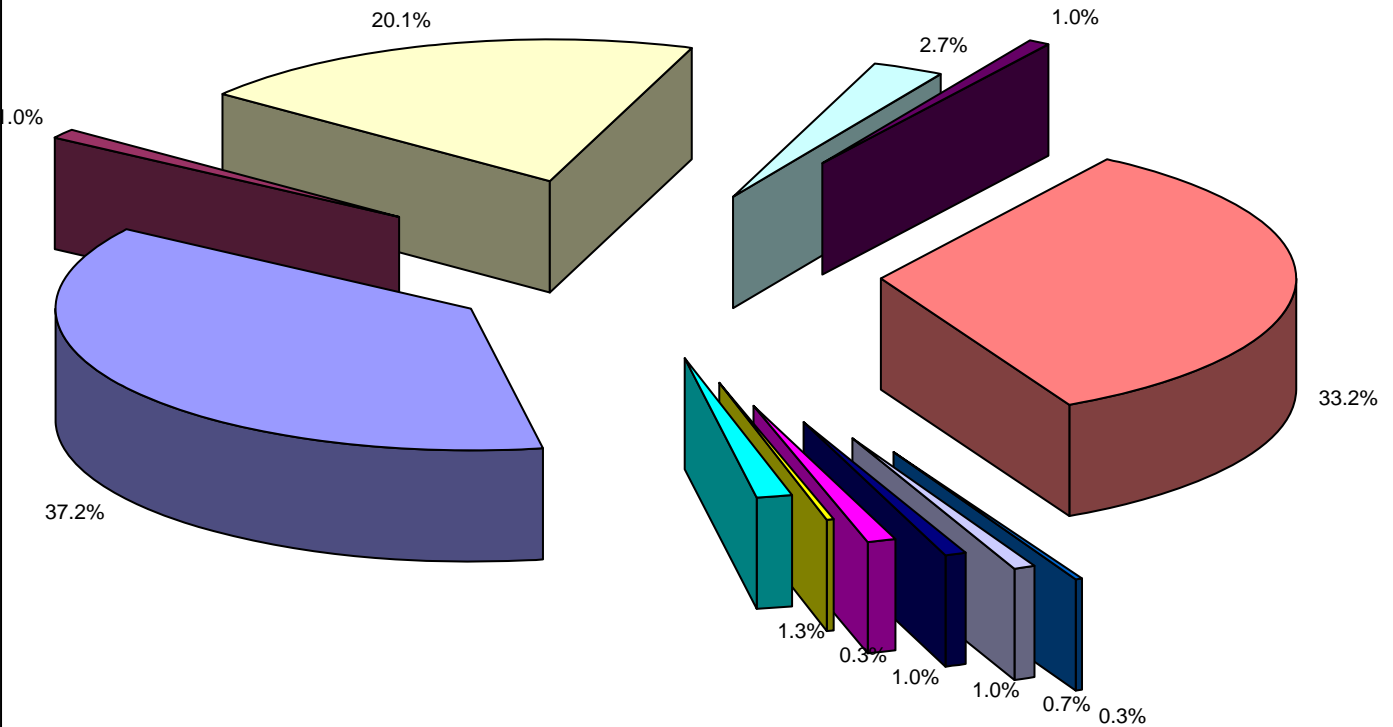
- | | | |
|-------------------------|---|---|
| Agency | Comprehensive Community Provider | Licensed Independent Practitioner Group |
| Hospital Inpatient | Hospital Outpatient | Licensed Independent Practitioner |
| Local Management Entity | Other | ADATC State Institution |
| ICFMR State Institution | Neuro Behavioral Center State Institution | Psychiatric State Institution (State Hospitals) |

Percentage of Providers in the PBH Network by Provider Type for Third Quarter



- | | | |
|-------------------------|---|---|
| Agency | Comprehensive Community Provider | Licensed Independent Practitioner Group |
| Hospital Inpatient | Hospital Outpatient | Licensed Independent Practitioner |
| Local Management Entity | Other | ADATC State Institution |
| ICFMR State Institution | Neuro Behavioral Center State Institution | Psychiatric State Institution (State Hospitals) |

Percentage of Providers in the PBH Network by Provider Type for Fourth Quarter



- | | | |
|-------------------------|---|---|
| Agency | Comprehensive Community Provider | Licensed Independent Practitioner Group |
| Hospital Inpatient | Hospital Outpatient | Licensed Independent Practitioner |
| Local Management Entity | Other | ADATC State Institution |
| ICFMR State Institution | Neuro Behavioral Center State Institution | Psychiatric State Institution (State Hospitals) |

Utilization Management

(Report as of August 1, 2011)

Distinct count of the number of consumers each provider served during the FY0910

Data was derived from the Distinct Consumer Served Data Cube as of August 1, 2011

FY 2010/2011							
Rank by # of Consumers Served	Provider Name	Quarter 1	Quarter 2	Quarter 3	Quarter 4	Total	Pct
1	DAYMARK Recovery Services, Inc.	5,826	5,419	5,562	4,492	11,401	53.06%
2	CMC - NorthEast, Inc. (Clinics, Network, and Physicians)	1,211	1,236	1,338	1,004	2,367	11.02%
3	Monarch	1,297	1,303	1,326	1,340	2,260	10.52%
4	RHA Health Services, Inc.	586	621	717	698	1,140	5.31%
5	ACT Medical Group, PA	385	446	334	184	651	3.03%
6	McLeod Addictive Disease Center, Inc.	437	438	445	433	620	2.89%
7	Easter Seals UCP North Carolina & Virginia, Inc.	414	446	455	469	553	2.57%
8	High Point Regional Health System dba Regional Psychiatric Associates	189	230	248	213	471	2.19%
9	Carolina Counseling and Consultation, LLC	114	163	201	215	378	1.76%
10	Rowan Regional Medical Center	100	106	125	111	365	1.70%
11	Carolinas Physicians Network, Inc. dba Cabarrus Family Medicine	99	111	125	108	281	1.31%
12	New Directions Psychiatric Services, PLLC	173	166	166	151	277	1.29%
13	Stanly Regional Medical Center	95	71	87	59	272	1.27%
14	Sims Consulting and Clinical Services, Inc.	107	101	120	137	249	1.16%
15	Youth / Adult Care Management, Inc.	206	201	87		249	1.16%
16	Addictions Recovery Care Association (ARCA)	66	56	62	88	242	1.13%
17	Family Services of Davidson County, Inc.	109	85	98	81	241	1.12%
18	Rowan Psychiatric and Medical Services, PA		81	141	183	227	1.06%
19	Salisbury Pediatric Associates, PA	95	99	97	98	221	1.03%
20	High Point Regional Health System	58	65	68	47	220	1.02%
21	Alliance Services	190	189	181	13	216	1.01%
22	Keystone WSNC LLC DBA Old Vineyard Youth Services	83	66	50	45	212	0.99%
23	Rowan Vocational Opportunities, Inc	187	189	193	201	210	0.98%
24	Path of Hope, Inc.	44	50	69	65	189	0.88%
25	Youth Villages	54	55	76	85	158	0.74%
26	Salisbury Psychiatric Associates	101	88	92	77	150	0.70%
27	Winston Psychiatric Associates, P.A.	60	45	43	20	150	0.70%
28	Community Specialized Services, Inc.	94	99	97	92	143	0.67%
29	The Arc of North Carolina, Inc.	100	120	132	120	142	0.66%
30	United Family Services	41	69	71	60	141	0.66%
31	Sims Consulting and Clinical Services, Inc. - Work First	44	36	21	37	137	0.64%
32	Holly Hill Hospital	31	37	40	35	132	0.61%
33	Kimber Lee Mork, LCSW, PLLC	41	53	58	48	121	0.56%
34	The Bridge of the Carolinas - Karen A. Bilbo, LPC	59	62	60	69	120	0.56%
35	George Popper, PhD	34	39	37	38	118	0.55%
36	Lorven Child & Family Development, LLC	28	51	68	65	112	0.52%
37	Union County Public Schools	25	47	73	69	94	0.44%
38	Thompson Child & Family Focus	44	70	70	67	91	0.42%
39	Developmental Disabilities Resources, Inc.	77	82	84	81	90	0.42%
40	Union Diversified Industries	78	77	77	80	85	0.40%
41	Clinical & Forensic Psychological Services, PC	30	21	32	34	84	0.39%
42	InReach	48	46	71	65	83	0.39%

43	Therapeutic Alternatives, Inc.	77	77	76	74	79	0.37%
44	Independent Opportunities, Inc.	59	66	66	73	78	0.36%
45	A Safe Place Counseling	39	37	50	49	76	0.35%
46	Joy Robbins dba Creative Counseling & Consulting, LLC	3	33	54	52	73	0.34%
47	Natalie Errante, PMH-NP	39	41	47	44	72	0.34%
48	Outlook Forensic & Behavioral Health, Inc.	17	19	26	37	69	0.32%
49	Gantt Psychotherapeutic and Consultation Services	12	29	46	46	67	0.31%
50	The Workshop of Davidson, Inc.	64	64	64	62	64	0.30%
51	Brenda L. Eshbach, PC dba Eshbach Counseling Services	42	29	25	25	62	0.29%
52	Bayada Nurses	44	45	44	50	60	0.28%
53	Carolina's Therapy Solutions, PA	28	31	32	36	60	0.28%
54	Hope Haven, Inc.	10	26	35	38	59	0.27%
55	Cabarrus County Group Homes, Inc.	54	54	54	53	57	0.27%
56	Rowan Psychotherapy Services	28	24	30	29	56	0.26%
57	Mental Health Association in NC, Inc.	56				56	0.26%
58	North Carolina MR, Inc.	51	52	53	53	54	0.25%
59	Carolina Parenting Solutions, PLLC	24	22	24	35	54	0.25%
60	Nazareth Children's Home	44	34	12	10	54	0.25%
61	Presbyterian Behavioral Health	20	15	21	8	54	0.25%
62	Mary Page, MA, LPA	30	31	35	34	53	0.25%
63	Jay L. Boulter, MA, LMFT, LPC	17	20	18	26	52	0.24%
64	Carolina Counseling, Inc.	21	25	22	22	52	0.24%
65	Turning Point Services	49	48	45	43	50	0.23%
66	Beverly Nicholas Jones, M.D., P.A.	20	16	16	14	45	0.21%
67	Triad Psychiatric and Counseling Center, PA	15	20	19	6	45	0.21%
68	RHA / Howell Care Centers, Inc.	41	40	41	38	44	0.20%
69	North Carolina Baptist Hospital	14	10	12	12	44	0.20%
70	Mecklenburg County	5	7	18	14	43	0.20%
71	Living Water Counseling Associates, PA	21	24	32	27	42	0.20%
72	Moses Cone Health Systems	11	9	16	11	41	0.19%
73	Frye Regional Medical Center	3	8	13	19	40	0.19%
74	West Counseling, PLLC	1	6	16	31	38	0.18%
75	Cynthia Wessinger, LCSW	21	21	23	19	37	0.17%
76	LifeSpan, Inc.	32	35	36	36	36	0.17%
77	GHA, Inc.	35	35	35	35	35	0.16%
78	Hope Center, LLC	24	18	17	20	35	0.16%
79	Behavioral Health Center CMC - Randolph	9	8	10	10	31	0.14%
80	ARC of Rowan County	30			7	31	0.14%
81	Outreach	31				31	0.14%
82	Sarah Fishback, LPA				30	30	0.14%
83	Cynthia D. Edwards, LCSW	23	19	18	16	30	0.14%
84	Brynn Marr Hospital, Inc.	11	6	7	12	29	0.13%
85	Timber Ridge Treatment Center	18	19	16	9	29	0.13%
86	Lee Hasty, LCSW, P.A.	24	17	5		29	0.13%
87	Alexander Youth Network, Inc.	15	16	20	19	28	0.13%
88	Thomasville Medical Center	6	9	9	6	28	0.13%
89	J. Iverson Riddle Center	27	27	27	27	27	0.13%
90	Judith M. Moore, LMFT dba Waxhaw Family Counseling	15	16	14		27	0.13%
91	Quality Care Developmental Services	13	15	10	10	26	0.12%
92	UMAR	19	21	20	20	25	0.12%
93	Children's Home Society of North Carolina, Inc	16	13	14	14	25	0.12%
94	Family Therapy Institute	1	8	8	12	25	0.12%
95	Jason E. Mastor, MD, PA	18	11	8	9	25	0.12%
96	ARC of Davidson County, Inc.	23	23	24	23	24	0.11%

97	O'Berry Center	24	24	24	23	24	0.11%
98	Spoken Precision, PLLC	17	17	20	18	23	0.11%
99	Winston Clinical Associates	6	3	8	8	23	0.11%
100	Piedmont Performance Evaluations, PLLC	9	9	7	7	23	0.11%
101	Genesis...A New Beginning, Inc.	15	8	6	3	23	0.11%
102	Broughton Hospital	7	6	9	9	21	0.10%
103	Novant Medical Group, Inc. dba Rowan Psychiatric Associates	16		2	3	21	0.10%
104	The Neil Group, Inc.	8	10	11	13	20	0.09%
105	Turning Point Homes, Inc.	12	14	12	8	20	0.09%
106	Forsyth Behavioral Health	9	5	4	4	20	0.09%
107	A.D.E.P.T. Non-Profit Services		9	8	18	19	0.09%
108	Community Living Concepts (CLC)	19	18	18	18	19	0.09%
109	CMC - NorthEast, Inc.	9	6	2	2	19	0.09%
110	Behavioral Health Center Mercy Horizons	13	7	5		19	0.09%
111	Piedmont Residential Development Center, Inc.	18	18	18	18	18	0.08%
112	C.F. Marketing, LLC	14	12	12	13	18	0.08%
113	Boyden Dean Melton, LCAS	8	11	10	11	17	0.08%
114	Lake Norman Psychological Services, PLLC	6	7	9	4	17	0.08%
115	CaroMont Health, Inc. dba Gaston Memorial Hospital, Inc.	4	6	5	3	17	0.08%
116	Ellen Koski-Ponton, LMFT dba Family Counseling & Enrichment	12	6	5	3	17	0.08%
117	Laura Seitz, LCSW			2	16	16	0.07%
118	Emotional Recovery and Wellness Center	11	11	11	14	16	0.07%
119	Britton & Crump, Inc.	16	3			16	0.07%
120	Elite Care Services, Inc.	12	13	15	15	15	0.07%
121	Murdoch Center	14	15	14	14	15	0.07%
122	Janice E. Helms, LPC	3	2	8	10	15	0.07%
123	Omni Visions, Inc.	9	8	11	10	15	0.07%
124	Richard Bridgette, Ph.D.	7	3	6	8	14	0.07%
125	John Robert Bradey, Ph.D.	4	3	8	6	14	0.07%
126	Grace Hospital Behavioral Health	3	7	2	3	14	0.07%
127	Focus Support Group, Inc.	12	12	13	13	13	0.06%
128	Union County Residential Services	13	13	13	13	13	0.06%
129	CNC/Access Inc. dba ResCare HomeCare	12	12	12	12	13	0.06%
130	Three Rivers Residential Treatment / Midlands Campus, Inc.	6	10	11	11	13	0.06%
131	Youth Focus	3	7	8	8	13	0.06%
132	Daniel P. Anthony, LPC dba Counseling Center at Providence Place	9	10	7	6	13	0.06%
133	S.T.E.P.s Developmental Academy, Inc.	7	9	10	12	12	0.06%
134	Quality Family Services	11	10			12	0.06%
135	VOCA Corp. of NC & Community Living of NC D/B/A Community Alternatives of NC	10	11	11	11	11	0.05%
136	HomeCare Management Corp.	7	7	8	10	11	0.05%
137	Ambleside, Inc.	10	9	9	9	11	0.05%
138	Excel Counseling Services, PLLC	5	6	8	6	11	0.05%
139	Coastal Carolina Neuropsychiatric Center, P.A.	2	3	3	5	11	0.05%
140	Greg Yousey, MA, LPA	10	4	2	1	11	0.05%
141	Timber Ridge Treatment Center, Inc. (SAY Program)	8	7	8	8	10	0.05%
142	New Hope Carolinas, Inc.	7	7	8	7	10	0.05%
143	Catawba Valley Medical Center	4	3	2	2	10	0.05%
144	Dawn Thomas, MA, LPA	3	5	3	1	10	0.05%
145	Devereux Georgia Treatment Network	4	6	7	6	9	0.04%
146	Journey, Inc.	5	6	8	6	9	0.04%
147	Roger A. Kalthoff, PhD, PA	4	4	3	3	9	0.04%
148	MedVentures, LLC dba Regional Physicians Physical Medicine and Rehabilitation	5	3	3		9	0.04%
149	Melissa Ann Doerfer, LPC	9	3	3		9	0.04%
150	Select Services, Inc.	6	7	8	8	8	0.04%

151	ABS LINGS SC, Inc. dba Palmetto Pines Behavioral Health	4	5	5	6	8	0.04%
152	Alyson G. Shaffer, M.Ed., BCBA	8	6	6	5	8	0.04%
153	Laura Marie Harbeson, LPC, NCC	5	2	5	5	8	0.04%
154	Jude E. Johnson, LMFT	3	3	4	4	8	0.04%
155	Marc L. Williams, MS	5	4	4	3	8	0.04%
156	Behavioral Health Center Kings Mountain	5	1	1	1	8	0.04%
157	Quest Provider Services, LLC	8				8	0.04%
158	Howell Child Care Centers, Inc.	7	7	7	7	7	0.03%
159	Mindmatters Hypnosis & Counseling, Inc.	2	4	5	3	7	0.03%
160	Robert "Chip" Theriault, LMFT	2	3	5	3	7	0.03%
161	Timothy Truemper, MS, LPC	5	5	6	3	7	0.03%
162	Central Regional Hospital	2	1	3	2	7	0.03%
163	Changing Seasons Counseling Service, PLLC	7	3			7	0.03%
164	Davis Regional Medical Center	3	1	3		7	0.03%
165	Southwood Place Group and Developmental Center, Inc.	6	6	5	5	6	0.03%
166	Caroline B. McCloud, MSW, LCSW	4	3	3	4	6	0.03%
167	Dotson Consulting and Counseling, Inc.	3	2	6	4	6	0.03%
168	Andrea S. Bullock, LPC	4	5	4	3	6	0.03%
169	Baptist Childrens Home of NC, Inc.		3	4	3	6	0.03%
170	Autism Services of Mecklenburg County	6	6	5	2	6	0.03%
171	ComServ	5	4	4	4	5	0.02%
172	Leigh Patterson, LPA		2	3	4	5	0.02%
173	Max McIntosh, LPC	3	3	2	3	5	0.02%
174	Barium Springs Home for Children	2	2	3	2	5	0.02%
175	Family Behavioral Health, PLLC			3	2	5	0.02%
176	Miracles Healing Centers, Inc.	3	4	2	2	5	0.02%
177	Thomas K. McKean, MD		2	1	2	5	0.02%
178	Roger F. Suclupe, MSW, LCSW	2	5	5	1	5	0.02%
179	Strategic Interventions, Inc.	5	4			5	0.02%
180	Amy Gatch, BCBA, LCSW	4	4	4	4	4	0.02%
181	Renu Life	4	4	4	4	4	0.02%
182	Diana's HomeCare, Inc.	4	4	3	3	4	0.02%
183	Dream Makers Assisted Living Services, LLC	4	3	3	3	4	0.02%
184	Stepping Stones Counseling & Consulting of Charlotte, PLLC	1	2	3	3	4	0.02%
185	Therapy Talk, Inc.	1		1	3	4	0.02%
186	Vanderhall Counseling Services, PC		1	1	3	4	0.02%
187	Mission Hospitals, Inc.		2	1	2	4	0.02%
188	Mary Beth Pugh, MS, LCSW	3	3	3	1	4	0.02%
189	Sandhills Regional Medical Center	1	1	1	1	4	0.02%
190	Brenda K. Martin Counseling Services	2	2			4	0.02%
191	Alcohol & Drug Services of Guilford, Inc.	2	3	3	3	3	0.01%
192	Hinds' Feet Farm, Inc.		2	3	3	3	0.01%
193	Jennifer Godwin, BCBA	2	3	3	3	3	0.01%
194	Mental Health Associates of the Triad	3	3	3	3	3	0.01%
195	Wendie S. Lloyd, LPC dba Lake Norman Counseling Service, PLLC	3	3	3	3	3	0.01%
196	Future Innovations, LLC	1	2	2	2	3	0.01%
197	Horne Family Counseling, Inc.	3	3	2	2	3	0.01%
198	Mario Zapata, MD, PC	3	2	2	2	3	0.01%
199	Specialized Services and Personnel, Inc.	3	2	2	2	3	0.01%
200	Jeffrey Marshall, LPA	1		1	1	3	0.01%
201	Nash Health Care Systems		1	1	1	3	0.01%
202	First Health of the Carolinas, Inc. DBA Moore Regional Hospital	1	3			3	0.01%
203	Natika M. McNeil, MHS, LPC, NCC		3			3	0.01%
204	Oasis Clinical Care Management, LLC	3				3	0.01%

205	Wake Forest University Health Sciences	2	2			3	0.01%
206	Active LINK Services, LLC		2	2	2	2	0.01%
207	Behavioral Health and Consulting Psychology, PLLC				2	2	0.01%
208	Family Works, Inc.	2	2	2	2	2	0.01%
209	Horizons Residential Care Center	2	2	2	2	2	0.01%
210	Rouse's Group Home, Inc.	2	2	2	2	2	0.01%
211	Unique Services	2	2	2	2	2	0.01%
212	A Rational Counseling Center	2	2	2	1	2	0.01%
213	Carenet, Inc. dba Baptist Hospital Carenet Counseling Center	1	2	1	1	2	0.01%
214	Lutheran Family Services in the Carolinas	2	2	1	1	2	0.01%
215	The Children's Home, Inc.	1			1	2	0.01%
216	Andrea W. Cochran, Ph.D.	2				2	0.01%
217	Berard Auditory Integration Training Systems, Inc. dba The Counseling Center			2		2	0.01%
218	Clinical & Consulting Solutions, PLLC	2				2	0.01%
219	Family Works Psychological Center, PLLC	2	2	2		2	0.01%
220	Horizon Care, Inc.	1	2	2		2	0.01%
221	James T. Barker II, MD		2	1		2	0.01%
222	John Reedy, Psy.D.	2				2	0.01%
223	Lakshmi Kamaraju, MD		1	1		2	0.01%
224	Miracles, Inc. Healing Center	2				2	0.01%
225	Person Centered Partnerships, Inc.	1		1		2	0.01%
226	Primary Care Solutions, Inc.	1	1			2	0.01%
227	Transitions Behavioral Healthcare, Inc.	2	2	1		2	0.01%
228	Arcadia Health Services, Inc. dba Arcadia Health Care	1	1	1	1	1	0.00%
229	Beyond Academics	1	1	1	1	1	0.00%
230	Building Bridges for Communities, LLC	1	1	1	1	1	0.00%
231	Carobell, Inc.	1	1	1	1	1	0.00%
232	Carolina Therapeutic Services, Inc.		1	1	1	1	0.00%
233	Caswell Center	1	1	1	1	1	0.00%
234	Catawba Psychiatric Services, PLLC	1			1	1	0.00%
235	Clarence Helms	1	1	1	1	1	0.00%
236	Community Services for Children	1	1	1	1	1	0.00%
237	FOCUS, Inc	1	1	1	1	1	0.00%
238	Freida and Graham Johnson	1	1	1	1	1	0.00%
239	Hughes Center, LLC dba The Hughes Center for Exceptional Children	1	1	1	1	1	0.00%
240	Johnston Psychiatric Associates, PA	1	1	1	1	1	0.00%
241	Marc Goldman	1	1	1	1	1	0.00%
242	Nancy L. King, MSW, LCSW, LCAS	1	1		1	1	0.00%
243	Paul Veach, LPC, LMFT	1	1	1	1	1	0.00%
244	Peterkin and Associates, Inc.	1	1	1	1	1	0.00%
245	Professional Counseling Services by Bonita, PLLC				1	1	0.00%
246	PSI MED, P.A.	1	1	1	1	1	0.00%
247	Residential Services, Inc.	1	1	1	1	1	0.00%
248	Skill Creations, Inc.	1	1	1	1	1	0.00%
249	T.L.C. Home, Inc.	1	1	1	1	1	0.00%
250	TEACCH	1	1	1	1	1	0.00%
251	The Arc of High Point, Inc.	1	1	1	1	1	0.00%
252	The Phoenix House Residential Treatment Center, Inc.	1			1	1	0.00%
253	The Pines Residential Treatment Center	1	1	1	1	1	0.00%
254	Therapeutic Resource Associates, PA	1	1	1	1	1	0.00%
255	Triad Telacare, Inc.	1	1	1	1	1	0.00%
256	Access Family Services, Inc.			1		1	0.00%
257	Agape Services, Inc.	1	1			1	0.00%
258	Annas Resources, P.C.	1	1			1	0.00%

259	Beaufort County Hospital Association, Inc.			1		1	0.00%
260	Bridging to Success, Inc.	1				1	0.00%
261	CareNet Counseling East			1		1	0.00%
262	Carol F. Peindl, RN, MSN	1				1	0.00%
263	Carolina Behavioral Care		1			1	0.00%
264	Carolina Clinical-Forensic Services, PLLC	1				1	0.00%
265	Carolina Psychological and Psychiatric Health Services, PA	1				1	0.00%
266	Chaddock Institute	1	1			1	0.00%
267	Change Academy at Lake of the Ozarks (CALO)	1				1	0.00%
268	Child & Family Therapy Center, P.C.	1	1	1		1	0.00%
269	Coastal Southeastern United Care		1			1	0.00%
270	East Carolina Psychiatric Consultants	1	1	1		1	0.00%
271	Erin B. Messmer, LPC, NCC	1				1	0.00%
272	Florence Crittenton Services, Inc.		1	1		1	0.00%
273	G & D Residential Services, LLC	1	1			1	0.00%
274	Garrison Counseling Services, PLLC	1	1			1	0.00%
275	Grew, Morter & Hartye, PA		1			1	0.00%
276	Jay Synn, MD	1				1	0.00%
277	Jodie Castellani, Ph.D.	1	1			1	0.00%
278	John R. Price, Ph.D		1			1	0.00%
279	Keystone Charlotte, LLC	1				1	0.00%
280	Kids Central of the Carolinas, LLC			1		1	0.00%
281	Lakeside Psychological Services, PLLC	1	1	1		1	0.00%
282	Marcelo Enrique Lopez-Claros, MD	1				1	0.00%
283	Miss Daisy's Gentlemen of the Future, Inc.	1				1	0.00%
284	Nadine Rosen, LPC	1				1	0.00%
285	Newcastle Family Therapy, PLLC		1			1	0.00%
286	Peace of Mind Counseling Services, Inc.	1				1	0.00%
287	People Helping People of NC, LLC			1		1	0.00%
288	Pitt County Memorial Hospital, Inc.	1				1	0.00%
289	Preferred Alternatives, Inc. - Corporate Office	1	1			1	0.00%
290	Psychological Medicine Clinic, PLLC	1	1			1	0.00%
291	Rebecca McKeever			1		1	0.00%
292	Robeson Health Care Corporation	1		1		1	0.00%
293	Southeastern Counseling Center	1	1			1	0.00%
294	Southeastern Regional Medical Center			1		1	0.00%
295	Stacey Scott, LPC dba New Beginning Counseling, PLLC	1				1	0.00%
296	Timothy Webster, Ph.D.		1			1	0.00%
297	Trinity Christian Counseling, PLLC	1	1			1	0.00%
298	UNC Hospitals at Chapel Hill	1	1			1	0.00%
299	Vikram R. Shukla, MD	1				1	0.00%
Total		12,187	12,141	12,468	11,233	21,486	100.00%

**Consumers who were discharged from services based on the submission of a discharge TAR during the
FY 2010/2011**

Discharge TAR Summary by Provider

Date Range: 7/1/2010 through 6/30/2011

Provider Name	Count of Discharges
ABS LINCS SC, Inc. dba Palmetto Pines Behavioral Health	3
Addictions Recovery Care Association (ARCA)	227
Alcohol & Drug Services of Guilford, Inc.	1
Alexander Youth Network, Inc.	8
Barium Springs Home for Children	1
Boyden Dean Melton, LCAS	1
Bridging to Success, Inc.	1
Britton & Crump, Inc.	13
Brynn Marr Hospital, Inc.	22
Cabarrus County Group Homes, Inc.	2
Carolina Counseling and Consultation, LLC	19
Carolina's Therapy Solutions, PA	50
Chaddock Institute	1
Children's Home Society of North Carolina, Inc	9
Clinical & Consulting Solutions, PLLC	3
Community Specialized Services, Inc.	57
DAYMARK Recovery Services, Inc.	242
Developmental Disabilities Resources, Inc.	3
Devereux Georgia Treatment Network	1
Easter Seals UCP North Carolina & Virginia, Inc.	25
Frye Regional Medical Center	25
Greg Yousey, MA, LPA	3
Hope Haven, Inc.	5
Horizon Care, Inc.	2
Keystone WSNC LLC DBA Old Vineyard Youth Services	206
McLeod Addictive Disease Center, Inc.	43
Miss Daisy's Gentlemen of the Future, Inc.	1
Monarch	242
Nazareth Children's Home	44
New Hope Carolinas, Inc.	2
Omni Visions, Inc.	4
Path of Hope, Inc.	62
Primary Care Solutions, Inc.	3
Quality Care Developmental Services	8
Quality Family Services	5
RHA Health Services, Inc.	435
Rowan Vocational Opportunities, Inc	12
Strategic Interventions, Inc.	1
The Children's Home, Inc.	2
The Pines Residential Treatment Center	1

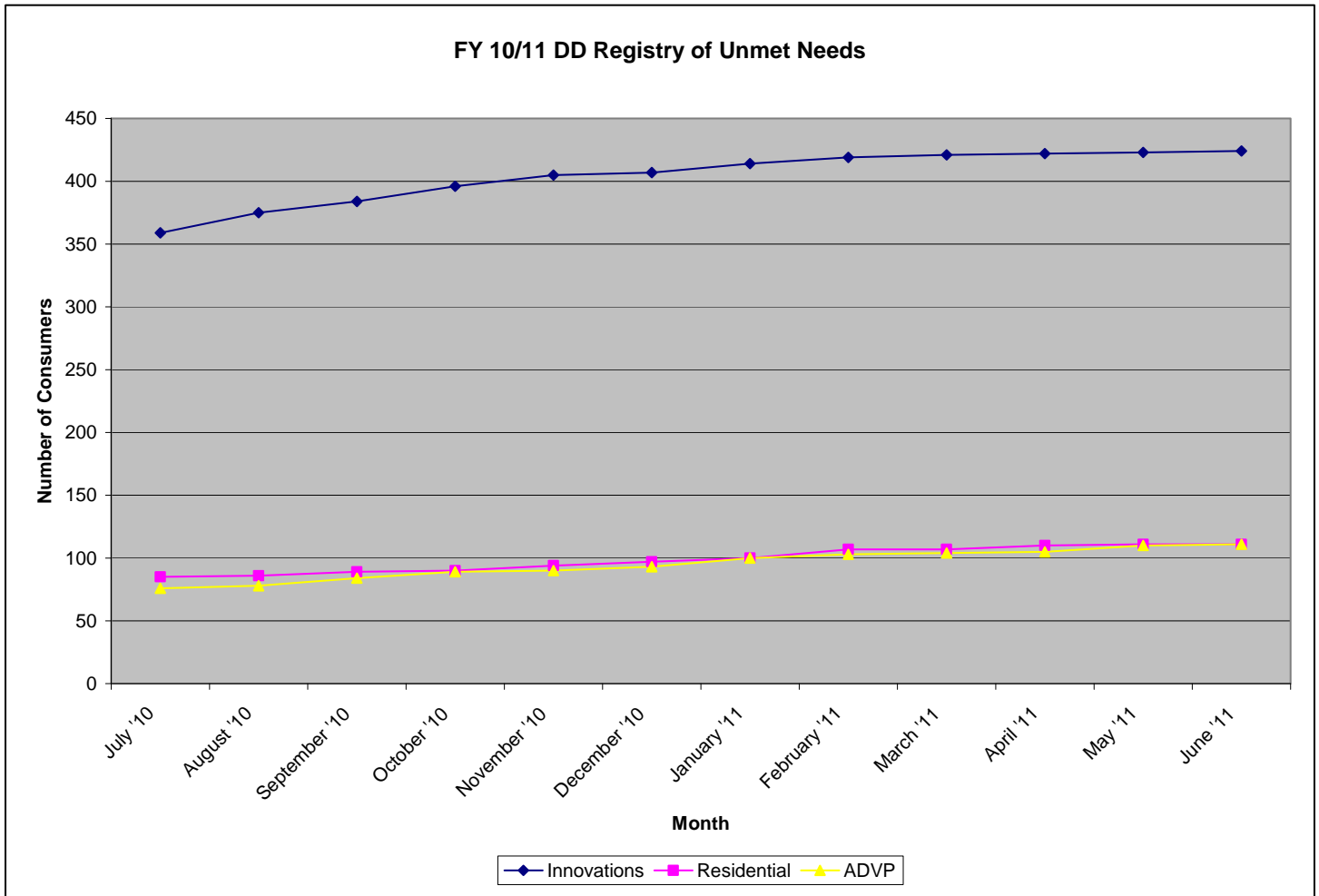
The Workshop of Davidson, Inc.	1
Thompson Child & Family Focus	5
Three Rivers Residential Treatment / Midlands Campus, Inc.	2
Timber Ridge Treatment Center	19
Timber Ridge Treatment Center, Inc. (SAY Program)	4
Turning Point Homes, Inc.	8
UMAR	4
Union County Public Schools	17
United Family Services	2
Youth / Adult Care Management, Inc.	27
Youth Focus	1
Youth Villages	110
Discharge Tar Grand Total:	1999

Status of the PBH Registry of Unmet Needs

*Registry information reported reflects all consumers who are currently "Available" or "In Review" for a service at the time of the report.

DD Services

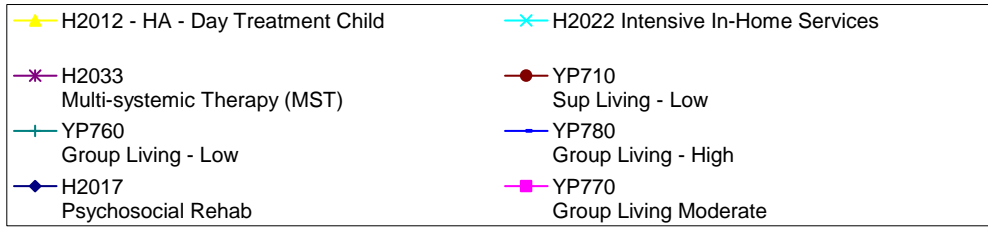
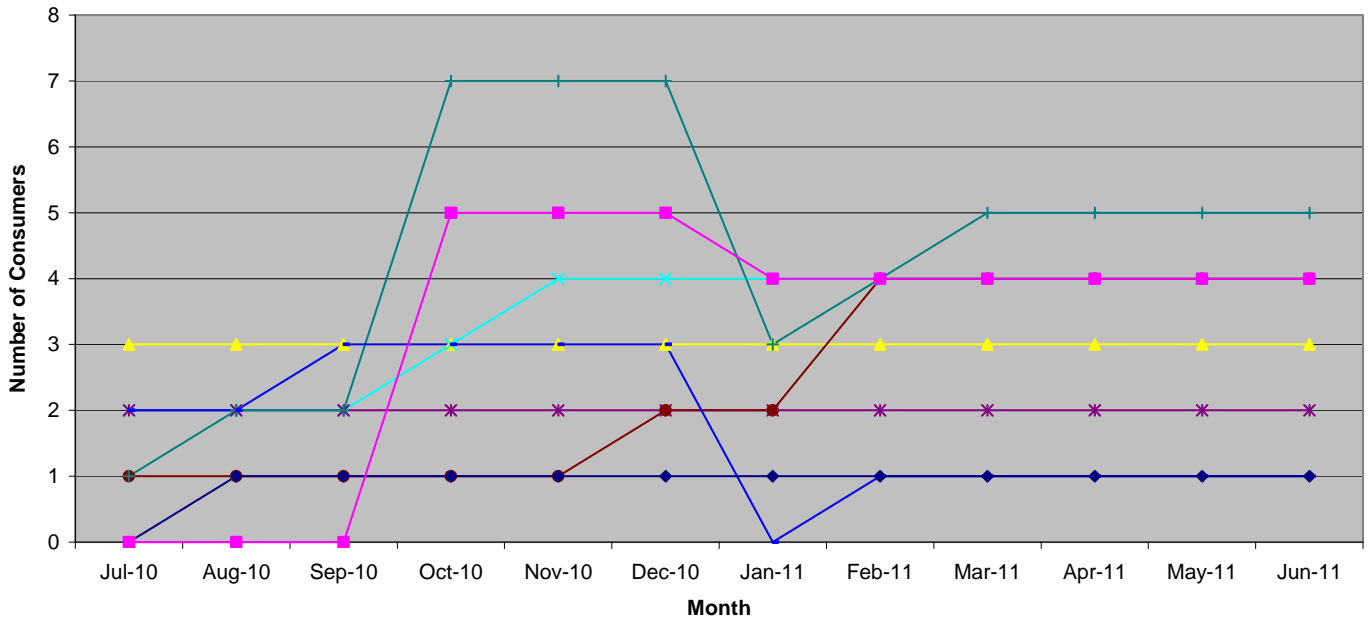
Month	Innovations	Residential	ADVP
July '10	359	85	76
August '10	375	86	78
September '10	384	89	84
October '10	396	90	89
November '10	405	94	90
December '10	407	97	93
January '11	414	100	100
February '11	419	107	103
March '11	421	107	104
April '11	422	110	105
May '11	423	111	110
June '11	424	111	111
Total	424	111	111



Mental Health

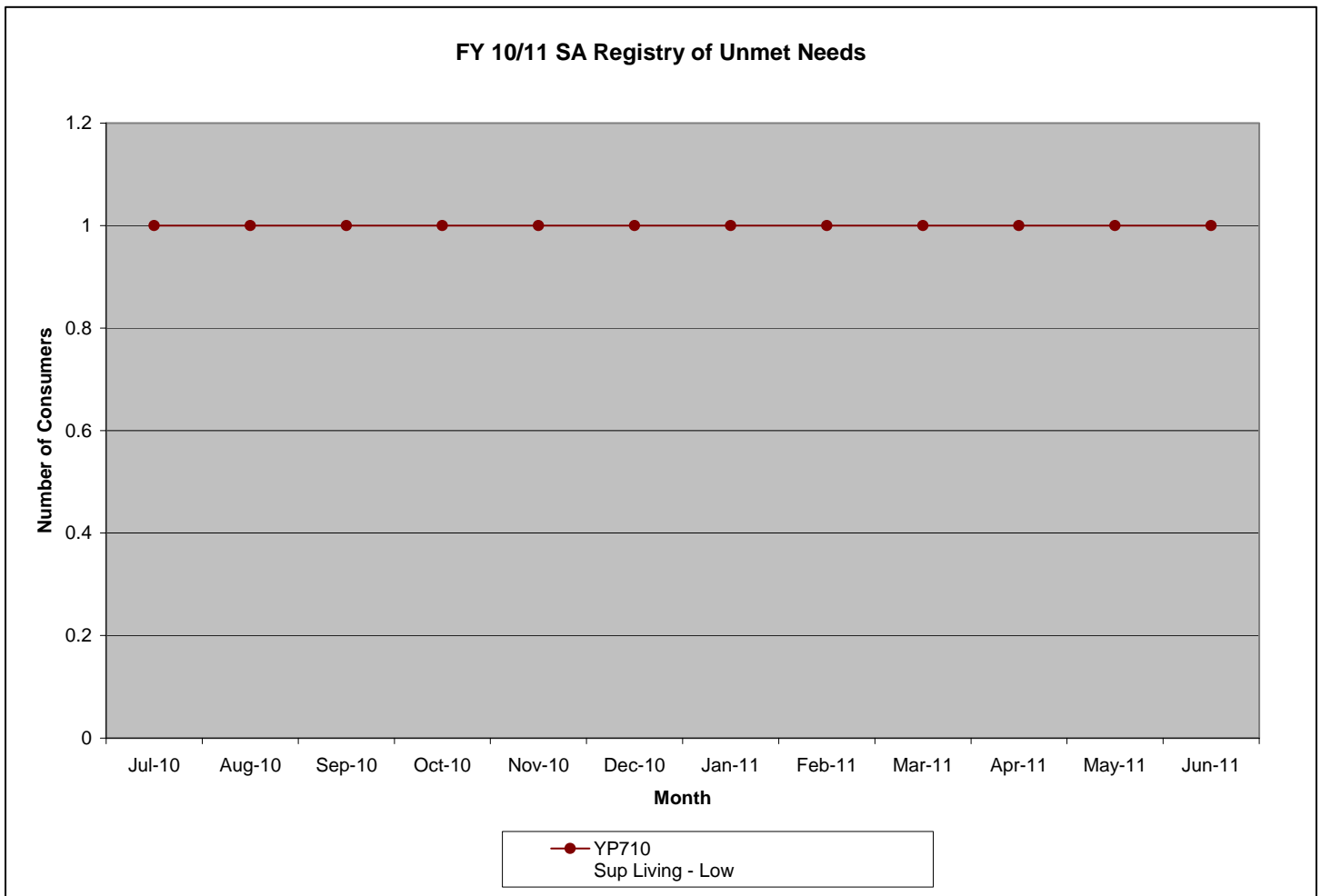
Month	H2012 - HA - Day Treatment Child	H2017 Psychosocial Rehab	H2022 Intensive In-Home Services	H2033 Multi-systemic Therapy (MST)	YP710 Sup Living - Low	YP760 Group Living - Low	YP770 Group Living Moderate	YP780 Group Living - High
Jul-10	3	0	2	2	1	1	0	2
Aug-10	3	1	2	2	1	2	0	2
Sep-10	3	1	2	2	1	2	0	3
Oct-10	3	1	3	2	1	7	5	3
Nov-10	3	1	4	2	1	7	5	3
Dec-10	3	1	4	2	2	7	5	3
Jan-11	3	1	4	2	2	3	4	0
Feb-11	3	1	4	2	4	4	4	1
Mar-11	3	1	4	2	4	5	4	1
Apr-11	3	1	4	2	4	5	4	1
May-11	3	1	4	2	4	5	4	1
Jun-11	3	1	4	2	4	5	4	1
FY 10/11	3	1	4	2	4	5	4	4

FY 10/11 MH Registry of Unmet Needs



Substance Abuse

Month	YP710 Sup Living - Low
Jul-10	1
Aug-10	1
Sep-10	1
Oct-10	1
Nov-10	1
Dec-10	1
Jan-11	1
Feb-11	1
Mar-11	1
Apr-11	1
May-11	1
Jun-11	1
FY 10/11	1



Timeliness of TAR Submissions

Date Range: 7/1/2010 through 6/30/2011

Provider Name	Total Count of Requested Services	Average Processing Time Allowed	No. of Requests received 14 days prior to Requested Start Date	% of Requests received 14 days prior to Requested Start Date
ABS LINCS SC, Inc. dba Palmetto Pines Behavioral Health	52	-3 Days	0	0%
ACT Medical Group, PA	604	6 Days	10	2%
Alexander Youth Network, Inc.	211	0 Days	5	2%
Andrea S. Bullock, LPC	56	-3 Days	0	0%
ARMC Health Care dba Alamance Regional Medical Center	1	0 Days	0	0%
Baptist Childrens Home of NC, Inc.	1	-4 Days	0	0%
Beverly Nicholas Jones, M.D., P.A.	10	-8 Days	0	0%
Boyden Dean Melton, LCAS	40	-2 Days	0	0%
Brenda K. Martin Counseling Services	3	-82 Days	0	0%
Brenda L. Eshbach, PC dba Eshbach Counseling Services	28	-2 Days	0	0%
Brenda Smith-Williams dba/ Bulls Consultation Services	6	-308 Days	0	0%
Broughton Hospital	201	1 Days	0	0%
Cabarrus County Group Homes, Inc.	51	-14 Days	27	53%
Carolina Clinical-Forensic Services, PLLC	1	-297 Days	0	0%
Carolina Counseling, Inc.	37	-34 Days	0	0%
Carolinas Physicians Network, Inc. dba Cabarrus Family Medicine	251	-9 Days	1	0%
Caroline B. McCloud, MSW, LCSW	10	0 Days	0	0%
Catawba Valley Medical Center	19	-2 Days	0	0%
Central Regional Hospital	30	-1 Days	0	0%
Change Academy at Lake of the Ozarks (CALO)	6	-41 Days	2	33%
Child & Family Therapy Center, P.C.	2	0 Days	0	0%
Clarence Helms	2	16 Days	2	100%
CNC/Access Inc. dba ResCare HomeCare	4	24 Days	4	100%
Community Living Concepts (CLC)	43	-2 Days	31	72%
Cynthia D. Edwards, LCSW	14	3 Days	4	29%
Cynthia Wessinger, LCSW	25	-5 Days	0	0%
Daniel P. Anthony, LPC dba Counseling Center at Providence Place	16	-8 Days	0	0%
Davis Regional Medical Center	4	-22 Days	0	0%
Dawn Thomas, MA, LPA	10	2 Days	0	0%
DAYMARK Recovery Services, Inc. - CRC Unit - Cabarrus County	654	0 Days	0	0%
DAYMARK Recovery Services, Inc. - Mobile Crisis Management / After Hours Emergency	435	0 Days	0	0%
Dorothea Dix Hospital	1	-3 Days	0	0%
Dotson Consulting and Counseling, Inc.	2	0 Days	0	0%
Dream Makers Assisted Living Services, LLC	16	-680 Days	6	38%
Easter Seals UCP North Carolina & Virginia, Inc.	648	-11 Days	149	23%
Elite Care Services, Inc.	44	-17 Days	16	36%
Emotional Recovery and Wellness Center	31	-1 Days	0	0%
Family Services of Davidson County, Inc.	36	3 Days	0	0%
Focus Support Group, Inc.	9	10 Days	4	44%
Forsyth Behavioral Health	27	-1 Days	0	0%

Frye Regional Medical Center	153	-4 Days	0	0%
G & D Residential Services, LLC	2	-245 Days	0	0%
Gantt Psychotherapeutic and Consultation Services	45	0 Days	0	0%
Garrison Counseling Services, PLLC	2	-74 Days	0	0%
Genesis...A New Beginning, Inc.	7	0 Days	0	0%
George Popper, PhD	194	-5 Days	0	0%
GHA, Inc.	78	18 Days	68	87%
Grew, Morter & Hartye, PA	3	-154 Days	0	0%
High Point Regional Health System	243	-1 Days	0	0%
Holly Hill Hospital	439	-1 Days	0	0%
Horne Family Counseling, Inc.	20	-35 Days	0	0%
Hughes Center, LLC dba The Hughes Center for Exceptional Children	8	-3 Days	0	0%
Independent Opportunities, Inc.	41	-13 Days	23	56%
InReach	7	3 Days	6	86%
Janice E. Helms, LPC	11	-8 Days	0	0%
John Robert Bradey, Ph.D.	13	0 Days	0	0%
Johnston Psychiatric Associates, PA	1	0 Days	0	0%
Julian F. Keith ADATC	9	-3 Days	0	0%
Kids Central of the Carolinas, LLC	3	-64 Days	0	0%
Kimber Lee Mork, LCSW, PLLC	4	-3 Days	0	0%
Lake Norman Psychological Services, PLLC	6	-74 Days	0	0%
Lakeside Psychological Services, PLLC	4	-182 Days	0	0%
Laura Marie Harbeson, LPC, NCC	32	-136 Days	0	0%
LifeSpan, Inc.	48	-38 Days	13	27%
Living Water Counseling Associates, PA	58	-9 Days	0	0%
Lorven Child & Family Development, LLC	54	-1 Days	0	0%
Lutheran Family Services in the Carolinas	3	-149 Days	0	0%
Marc L. Williams, MS	3	0 Days	0	0%
Mario Zapata, MD, PC	7	-205 Days	0	0%
Mary Beth Pugh, MS, LCSW	7	-17 Days	0	0%
Max McIntosh, LPC	13	-47 Days	0	0%
McLeod Addictive Disease Center, Inc.	3199	-4 Days	220	7%
Mecklenburg County	62	0 Days	0	0%
MedVentures, LLC dba Regional Physicians Physical Medicine and Rehabilitation	8	0 Days	0	0%
Mental Health Associates of the Triad	6	3 Days	0	0%
Mindmatters Hypnosis & Counseling, Inc.	7	0 Days	0	0%
Miracles Healing Centers, Inc.	1	-28 Days	0	0%
Mission Hospitals, Inc.	14	-1 Days	0	0%
Monarch	4847	-3 Days	755	16%
Moses Cone Health Systems	72	-1 Days	0	0%
Nash Health Care Systems	3	-5 Days	0	0%
Natalie Errante, PMH-NP	102	-15 Days	3	3%
New Directions Psychiatric Services, PLLC	233	-16 Days	1	0%
New Directions The Treatment Center for Anxiety & Depression	1	-470 Days	0	0%
New Hope Carolinas, Inc.	100	12 Days	59	59%
Newcastle Family Therapy, PLLC	2	-40 Days	0	0%
Oasis Clinical Care Management, LLC	2	0 Days	0	0%
Omni Visions, Inc.	40	-13 Days	8	20%
Path of Hope, Inc.	330	0 Days	0	0%
Paul Veach, LPC, LMFT	2	0 Days	0	0%
PBH	6172	12 Days	4227	68%

Piedmont Performance Evaluations, PLLC	63	-5 Days	0	0%
Pitt County Memorial Hospital, Inc.	8	-26 Days	0	0%
Presbyterian Behavioral Health	161	-1 Days	0	0%
Primary Care Solutions, Inc.	5	8 Days	0	0%
PSI MED, P.A.	1	-383 Days	0	0%
Quality Care Developmental Services	146	6 Days	25	17%
Renu Life	25	10 Days	8	32%
RHA / Howell Care Centers, Inc.	37	7 Days	12	32%
RHA Health Services, Inc. - MI/DD Specialized	1	0 Days	0	0%
Robeson Health Care Corporation	2	-116 Days	0	0%
Roger F. Suclupe, MSW, LCSW	2	0 Days	0	0%
Rowan Vocational Opportunities, Inc	370	2 Days	241	65%
S.T.E.P.s Developmental Academy, Inc.	5	0 Days	0	0%
Salisbury Pediatric Associates, PA	86	-14 Days	0	0%
Salisbury Psychiatric Associates	112	-5 Days	9	8%
Sarah Fishback, LPA	19	0 Days	0	0%
Shelby Children's Clinic	2	-327 Days	0	0%
Stanly Regional Medical Center	591	-2 Days	0	0%
Strategic Interventions, Inc.	30	-4 Days	5	17%
The Children's Home, Inc.	6	8 Days	0	0%
The Phoenix House Residential Treatment Center, Inc.	5	-70 Days	0	0%
The Pines Residential Treatment Center	10	3 Days	0	0%
The Workshop of Davidson, Inc.	90	9 Days	24	27%
Therapeutic Alternatives, Inc.	49	3 Days	4	8%
Therapeutic Resource Associates, PA	1	0 Days	0	0%
Trinity Christian Counseling, PLLC	2	-221 Days	0	0%
Turning Point Homes, Inc.	90	-4 Days	16	18%
Turning Point Services	16	-6 Days	1	6%
UMAR	86	-102 Days	33	38%
UNC Hospitals at Chapel Hill	16	-1 Days	0	0%
Wendie S. Lloyd, LPC dba Lake Norman Counseling Service, PLLC	12	-119 Days	0	0%
West Counseling, PLLC	25	0 Days	0	0%
A Rational Counseling Center	3	-12 Days	0	0%
A Safe Place Counseling	77	-4 Days	0	0%
A.D.E.P.T. Non-Profit Services	41	-20 Days	2	5%
Access Family Services, Inc.	1	-97 Days	0	0%
Active LINK Services, LLC	8	-217 Days	0	0%
Addiction Recovery Medical Services, PLLC	1	-287 Days	0	0%
Addictions Recovery Care Association (ARCA)	320	-1 Days	0	0%
Agape Services, Inc.	4	-12 Days	0	0%
Alcohol & Drug Services of Guilford, Inc.	7	8 Days	1	14%
Ambleside, Inc.	1	11 Days	0	0%
Arc of Davidson County, Inc.	23	-49 Days	18	78%
Barium Springs Home for Children	31	6 Days	7	23%
Bayada Nurses	48	21 Days	37	77%
Beaufort County Hospital Association, Inc.	1	-1 Days	0	0%
Behavioral Health and Consulting Psychology, PLLC	1	5 Days	0	0%
Behavioral Health Center CMC - Randolph	148	-1 Days	0	0%
Behavioral Health Center Kings Mountain	21	0 Days	0	0%
Behavioral Health Center Mercy Horizons	24	-3 Days	0	0%
Berard Auditory Integration Training Systems, Inc. dba The Counseling Center	16	-244 Days	0	0%

Brynn Marr Hospital, Inc.	122	-3 Days	0	0%
C.F. Marketing, LLC	11	-21 Days	0	0%
Carenet, Inc. dba Baptist Hospital Carenet Counseling Center	5	-48 Days	0	0%
Carolina Counseling and Consultation, LLC	769	-1 Days	8	1%
Carolina Parenting Solutions, PLLC	150	-6 Days	43	29%
Carolina Therapeutic Services, Inc.	6	-59 Days	0	0%
Carolina's Therapy Solutions, PA	85	-8 Days	0	0%
CaroMont Health, Inc. dba Gaston Memorial Hospital, Inc.	28	-8 Days	0	0%
Charles A. Cannon Memorial Hospital, Inc.	2	-2 Days	0	0%
Cherry Hospital	1	-3 Days	0	0%
Children's Home Society of North Carolina, Inc	67	-46 Days	22	33%
Clinical & Forensic Psychological Services, PC	99	-19 Days	0	0%
CMC - NorthEast, Inc.	135	0 Days	0	0%
CMC - NorthEast, Inc. (Clinics, Network, and Physicians)	3538	-3 Days	21	1%
Coastal Southeastern United Care	1	-166 Days	0	0%
Community Services for Children	10	-2 Days	0	0%
Community Specialized Services, Inc.	562	6 Days	127	23%
DAYMARK Recovery Services, Inc.	6218	0 Days	39	1%
DAYMARK Recovery Services, Inc. - CRC Unit - Union County	592	0 Days	0	0%
Developmental Disabilities Resources, Inc.	56	-6 Days	35	63%
Devereux Georgia Treatment Network	78	-5 Days	1	1%
Diana's HomeCare, Inc.	4	-70 Days	0	0%
Ellen Koski-Ponton, LMFT dba Family Counseling & Enrichment	24	-19 Days	0	0%
Erin B. Messmer, LPC, NCC	6	-446 Days	0	0%
Excel Counseling Services, PLLC	5	0 Days	0	0%
Family Works, Inc.	1	0 Days	0	0%
First Health of the Carolinas, Inc. DBA Moore Regional Hospital	1	-1 Days	0	0%
Future Innovations, LLC	17	2 Days	0	0%
Grace Hospital Behavioral Health	26	-1 Days	0	0%
Greg Yousey, MA, LPA	24	-2 Days	0	0%
High Point Regional Health System dba Regional Psychiatric Associates	376	0 Days	18	5%
Hinds' Feet Farm, Inc.	19	-34 Days	3	16%
HomeCare Management Corp.	3	-180 Days	0	0%
Hope Center, LLC	20	-16 Days	0	0%
Hope Haven, Inc.	69	0 Days	0	0%
Horizon Care, Inc.	12	-26 Days	0	0%
Jay L. Boulter, MA, LMFT, LPC	6	0 Days	0	0%
Jeffrey Marshall, LPA	3	14 Days	1	33%
Journey, Inc.	9	-17 Days	0	0%
Joy Robbins dba Creative Counseling & Consulting, LLC	52	-3 Days	1	2%
Jude E. Johnson, LMFT	11	-3 Days	0	0%
Keystone WSNC LLC DBA Old Vineyard Youth Services	945	-3 Days	1	0%
Lakshmi Kamaraju, MD	7	-70 Days	0	0%
Lee Hasty, LCSW, P.A.	5	-1 Days	0	0%
Leigh Patterson, LPA	17	0 Days	0	0%
Mary Page, MA, LPA	50	-1 Days	0	0%
Melissa Ann Doerfer, LPC	2	0 Days	0	0%
Monarch - Emergency Backup Staffing	2	0 Days	0	0%
Nancy L. King, MSW, LCSW, LCAS	2	-190 Days	0	0%
Natika M. McNeil, MHS, LPC, NCC	7	-109 Days	0	0%
National Mentor Healthcare LLC dba NC Mentor	1	-345 Days	0	0%

Nazareth Children's Home	204	3 Days	12	6%
North Carolina Baptist Hospital	106	-3 Days	0	0%
People Helping People of NC, LLC	2	-122 Days	0	0%
Professional Counseling Services by Bonita, PLLC	8	-20 Days	0	0%
R.J. Blackley ADATC	5	0 Days	0	0%
Rebecca McKeever	2	-64 Days	0	0%
RHA Health Services, Inc.	3544	0 Days	716	20%
Richard Bridgette, Ph.D.	9	-9 Days	1	11%
Robert "Chip" Theriault, LMFT	1	0 Days	0	0%
Rowan Psychotherapy Services	46	-5 Days	0	0%
Rowan Regional Medical Center	738	-2 Days	0	0%
Sandhills Regional Medical Center	1	-4 Days	0	0%
Sims Consulting and Clinical Services, Inc.	470	-19 Days	6	1%
Southeastern Regional Medical Center	1	-3 Days	0	0%
Specialized Services and Personnel, Inc.	4	27 Days	4	100%
Stepping Stones Counseling & Consulting of Charlotte, PLLC	5	3 Days	1	20%
The Arc of North Carolina, Inc.	3	22 Days	1	33%
The Bridge of the Carolinas - Karen A. Bilbo, LPC	149	-7 Days	1	1%
Thomasville Medical Center	18	-3 Days	0	0%
Thompson Child & Family Focus	210	0 Days	33	16%
Three Rivers Residential Treatment / Midlands Campus, Inc.	109	3 Days	0	0%
Timber Ridge Treatment Center	261	-1 Days	16	6%
Timber Ridge Treatment Center, Inc. (SAY Program)	154	1 Days	14	9%
Timothy Truemper, MS, LPC	11	-26 Days	0	0%
Triad Telacare, Inc.	5	-76 Days	1	20%
Union County Public Schools	112	-6 Days	0	0%
Union County Residential Services	10	19 Days	10	100%
Union Diversified Industries	110	-45 Days	7	6%
Unique Services	2	-18 Days	0	0%
United Family Services	47	-14 Days	1	2%
Wake Forest University Health Sciences	33	-161 Days	0	0%
Walter B. Jones ADATC	4	1 Days	0	0%
Winston Psychiatric Associates, P.A.	1	-5 Days	0	0%
Youth Focus	39	-1 Days	10	26%
Youth Villages	34	3 Days	0	0%



Treatment Authorization Request Compliance

Date Range: 7/1/2010 through 6/30/2011

DX: All Insurance: All

# Days till UM Action	Total Completed	Total Excluding Admin Denials	Approved	Clinical Denial	Part Denial	Admin Denial	Discharge from Service	Total Approved	Total Percent Approved
14 days	46,461	39,330	36,764	237	5	7,131	2,324	39,088	99.385%
15-28 days	1,749	1,557	1,444	61	9	192	43	1,487	95.504%
>28 days	435	273	250	0	1	162	22	272	99.634%
Total Requests	48,645	41,160	38,458	298	15	7,485	2,389	40,847	99.24%
Average Time to Complete	4	4	4	10	20	7	4	4	***

Total TARs completed in 14 days Excluding Admin Denials / Total Requests Completed Excluding Admin Denials = 95.554%

Total TARs completed in 15-28 days Excluding Admin Denials / Total Requests Completed Excluding Admin Denials = 3.783%

Total TARs completed in >28 days Excluding Admin Denials / Total Requests Completed Excluding Admin Denials = 0.663%

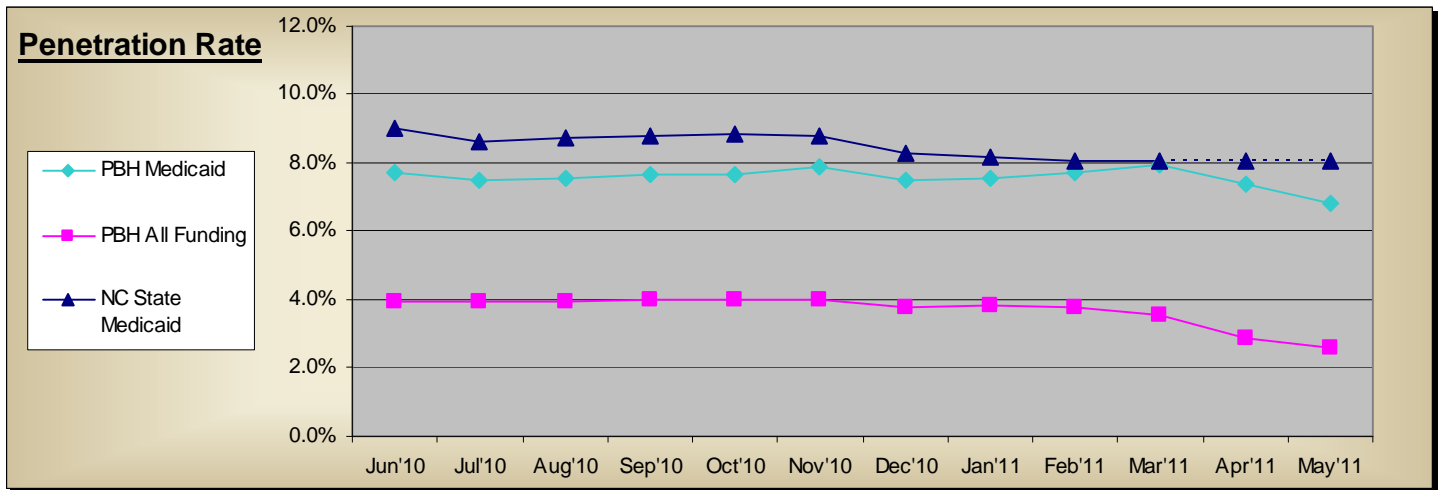
TRENDING REPORTS

Accessibility

(Report as of June 15, 2011)

Penetration Rate:

<u>PBH Medicaid</u>	<u>12 Mos Moving Avg.</u>	<u>PBH All Funding Sources</u>	<u>12 Mos Moving Avg.</u>
Total Persons Served	5,978	Total Persons Served	7,639
Total Eligibles	78,945	Total Medicaid & Uninsured Population	207,331
Penetration Rate	7.6%	Penetration Rate	3.7%



Note: The vertical line on the graph represents the last month of complete claims data.

Annual Penetration Rate by Diagnosis: (Report as of June 9, 2011)

Diagnosis (12 Month Calculation for Jun10 - May11)	% to Total by Diagnosis	# of Persons and Penetration %
• MH		
Number of Persons Served	64.51%	8,813
PBH Medicaid Eligibles	16.73%	18,707
Penetration Rate by Diagnosis		47.11%
• SA		
Number of Persons Served	3.62%	494
PBH Medicaid Eligibles	1.35%	1,509
Penetration Rate by Diagnosis		32.74%
• DD		
Number of Persons Served	15.72%	2,147
PBH Medicaid Eligibles	2.74%	3,058
Penetration Rate by Diagnosis		70.21%
• Non-Targeted		
Number of Persons Served	16.16%	2,207
PBH Medicaid Eligibles	79.18%	88,534
Penetration Rate by Diagnosis		2.49%
• Total		
Number of Persons Served	100.00%	13,661
PBH Medicaid Eligibles	100.00%	111,808
Penetration Rate by Diagnosis		12.22%

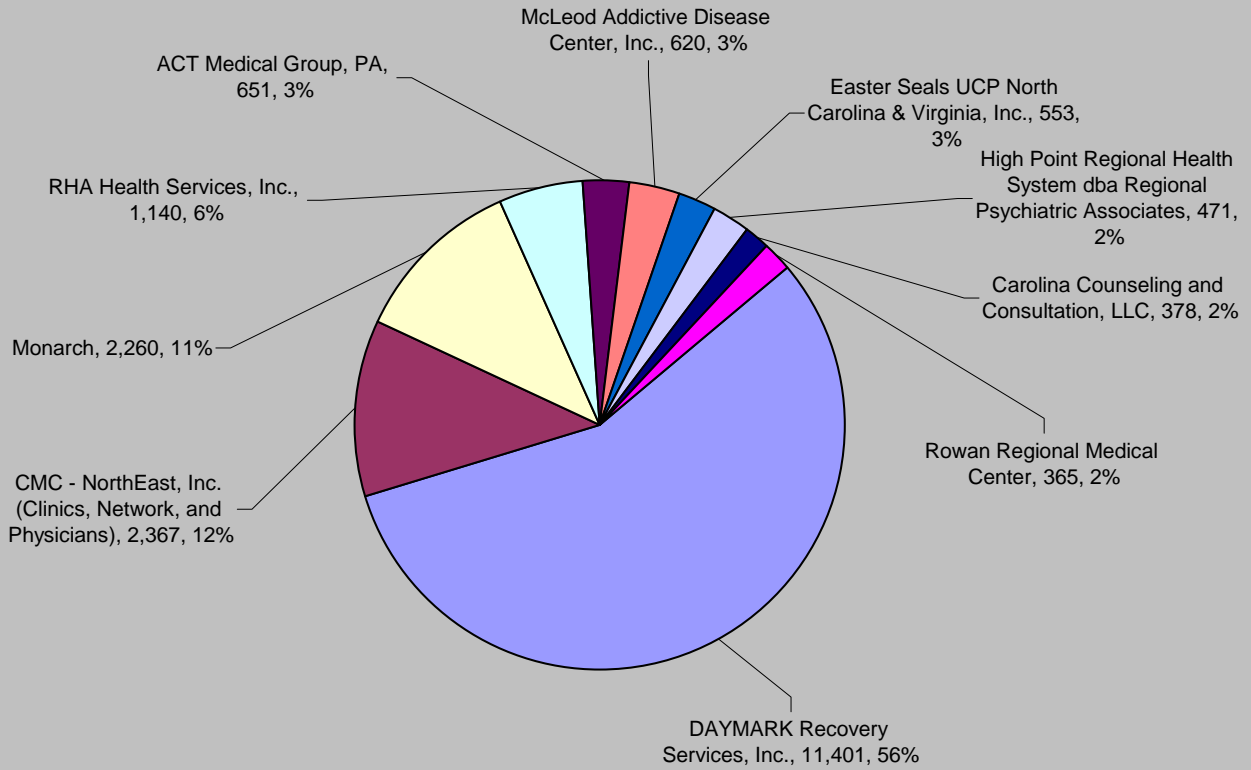
Accessibility

Medicaid Penetration Rate by Race: (July 1, 2010 - June 30, 2011)

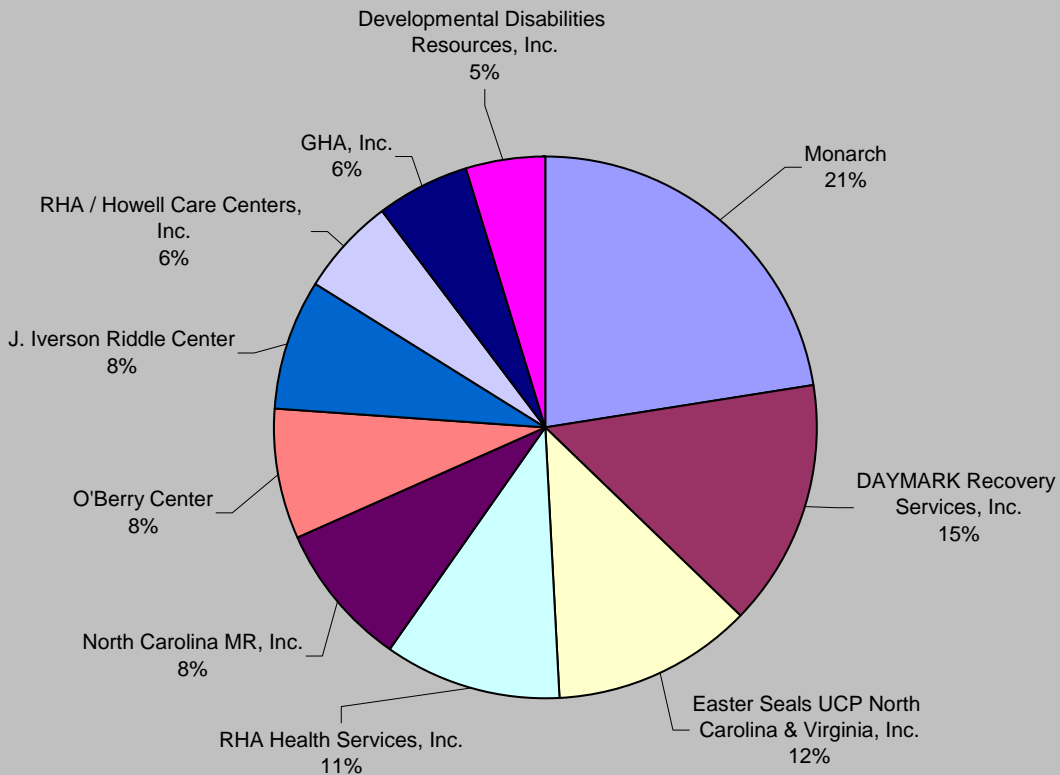
Report as of August 2, 2011

Race	%s by Race	Number of People by Race
• American Indian/Native American Number of persons served PBH Medicaid Population Penetration Rate by Race	0.29% 0.26% 13.99%	40 286
• Asian Number of persons served PBH Medicaid Population Penetration Rate by Race	0.30% 1.02% 3.66%	42 1,148
• Black/African American Number of persons served PBH Medicaid Population Penetration Rate by Race	21.31% 24.65% 10.70%	2,957 27,624
• Other and Multiracial Number of persons served PBH Medicaid Population Penetration Rate by Race	5.36% 10.06% 6.60%	744 11,281
• Pacific Islander Number of persons served PBH Medicaid Population Penetration Rate by Race	0.00% 0.00% 0.00%	0 4
• White Number of persons served PBH Medicaid Population Penetration Rate by Race	72.71% 64.01% 14.06%	10,090 71,744
• Total Number of persons served PBH Medicaid Population Penetration Rate by Race	100.00% 100.00% 12.38%	13,878 112,084

Top Ten Providers by Number Served - FY 2010/2011



Top Ten Providers by Total Claims Paid - FY 2010/2011

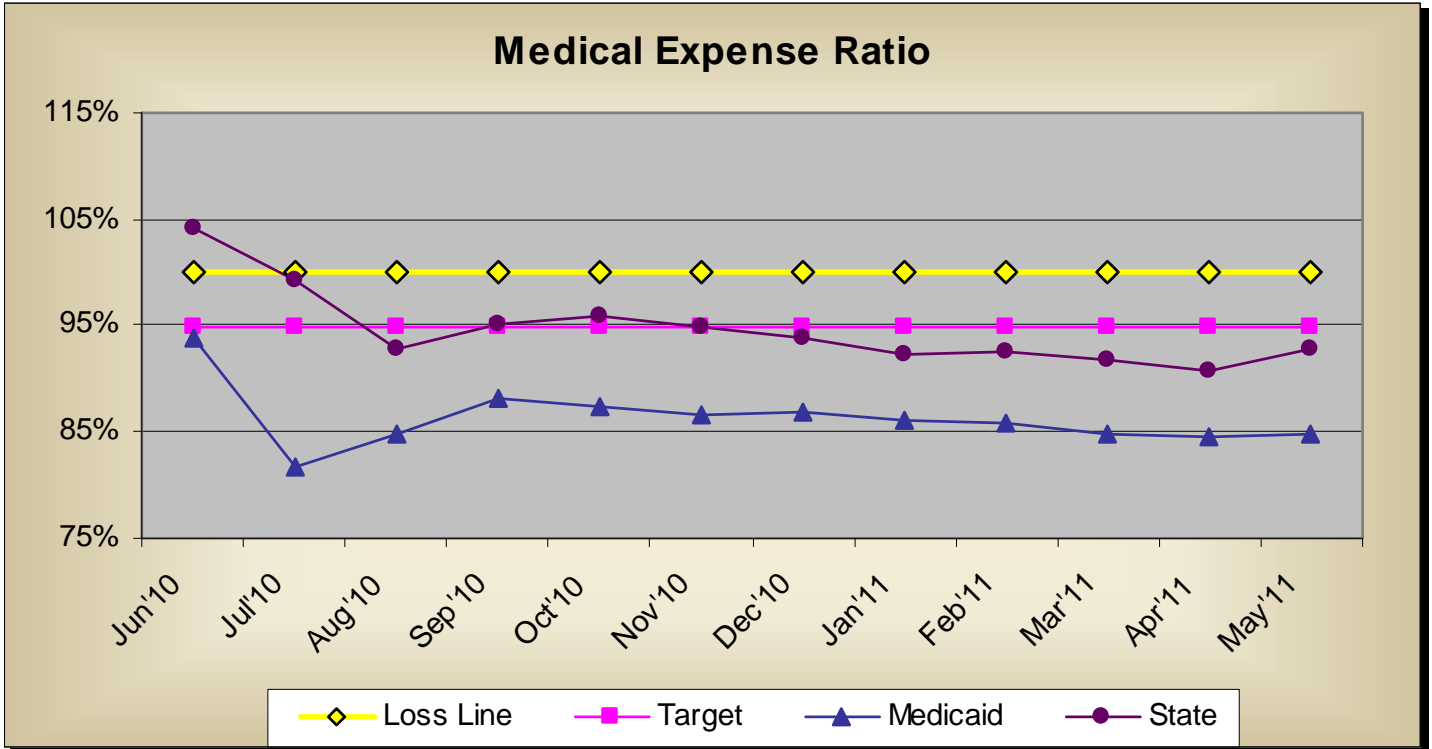


Risk

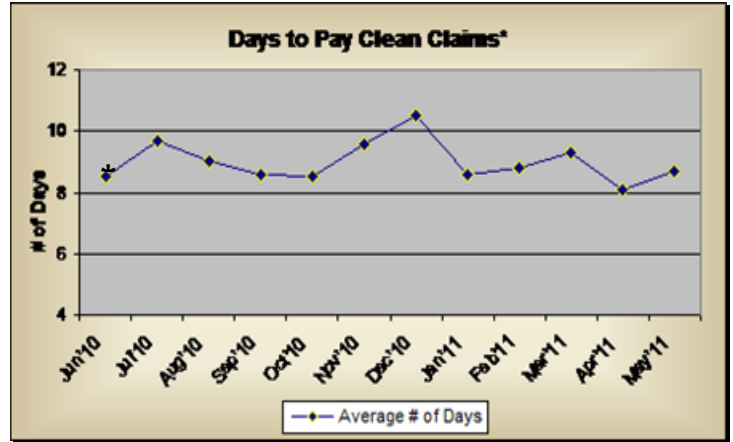
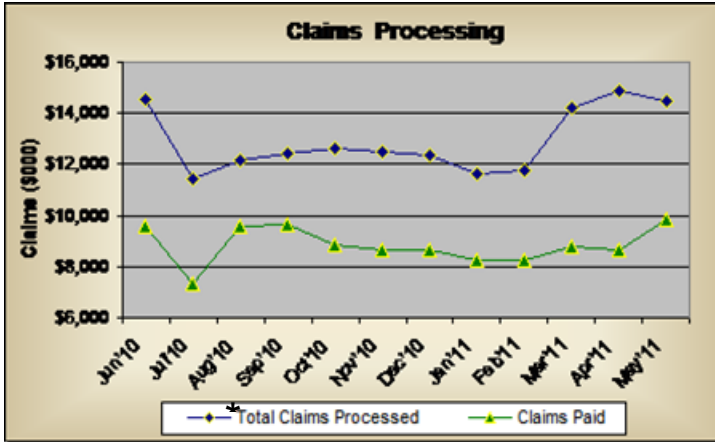
(Report as of June 16, 2011)

Medical Expense Ratio:

		<u>YTD</u>	<u>Annualized</u>
Medicaid		84.8%	84.8%
	\$ Variance Under	\$ 15,426,495.00	\$ 16,828,904.00
State		92.7%	92.7%
	\$ Variance Under	\$ 1,930,117.00	\$ 2,105,582.00



Claims: (Report as of June 10, 2011)



* Decrease in Jul'10 due to claims not submitted by Daymark until current year contract finalized.

* Clean claims contain all information needed in order to make payment.

** Increase for Mar - May'11 is due to a higher volume of denials and resubmissions as a result of the new Service Facility location edit requiring 837 claims billing to use a 9 digit zip code.

Number of Days to Process and Pay All Claims: (Report as of June 8, 2011)

	Dec'10	Jan'11	Feb'11	Mar'11	Apr'11	May'11
Service Date to Received Date	18.0	20.1	19.9	16.6	20.2	20.0
Received Date to Paid Date	11.1	9.8	10.2	11.3	9.0	9.6
Service Date to Paid Date	29.1	29.9	30.1	27.9	29.2	29.6

Top 5 Reasons for Denied Claims Dec '10 – May '11:

(Report as of June 15, 2011)

- | | |
|---|----------------|
| 1. Duplicate Claim | \$1,554,900.00 |
| 2. Missing/invalid treatment authorization code | \$732,323.00 |
| 3. Claim received after billing period | \$706,794.00 |
| 4. Missing/invalid place of service | \$376,544.00 |
| 5. Missing/invalid diagnosis or condition | \$123,772.00 |