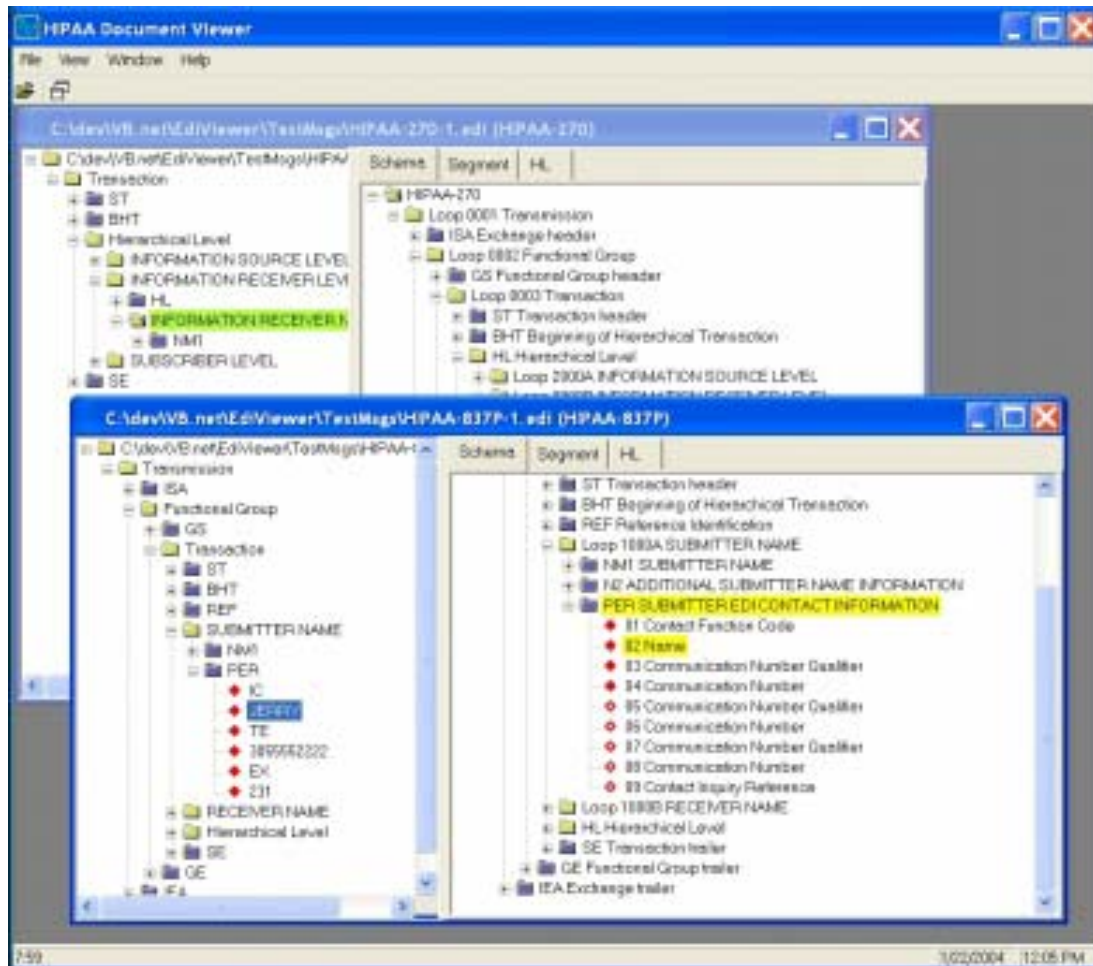


HIPAA Document Viewer

HIPAA Document Viewer program runs in Microsoft Windows environment. It supports Windows 95/98/Me, Windows NT 4.0, Windows 2000, and Windows XP. The HIPAA Document Viewer 1.1 allows you to view HIPAA documents in a hierarchical tree view, to print the document one line per segment with indentation, and to export the document to an XML file.



This program is developed using Microsoft .Net Framework Technology. You need .Net Framework run time environment 1.1 installed on your computer to run this application. Minimum system Requirement: Any Intel or AMD based computers running Windows 95/98/Me or Windows NT 4.0/2000 or Windows XP.

The recommended system: Intel Celeron/Pentium 2.0 GHz or AMD Athlon XP 2000+, 128 MB Memory, 100 MB disk storage, monitor resolution 800x600 or better.

The HIPAA Document Viewer can read the following documents:	
270/271	Health Care Eligibility Benefit Inquiry/Response
276/277	Health Care Claim Status Request/Response
278	Health Care Services Review Request/Response
820	Payment Order/Remittance Advice
834	Health Care Benefit Enrollment and Maintenance
835	Health Care Claim Payment/Advice
837 P,D,I	Health Care Claim, Professional, Dental, and Institutional

<http://www.hsu-computing.com/hipaaViewerHome.htm>