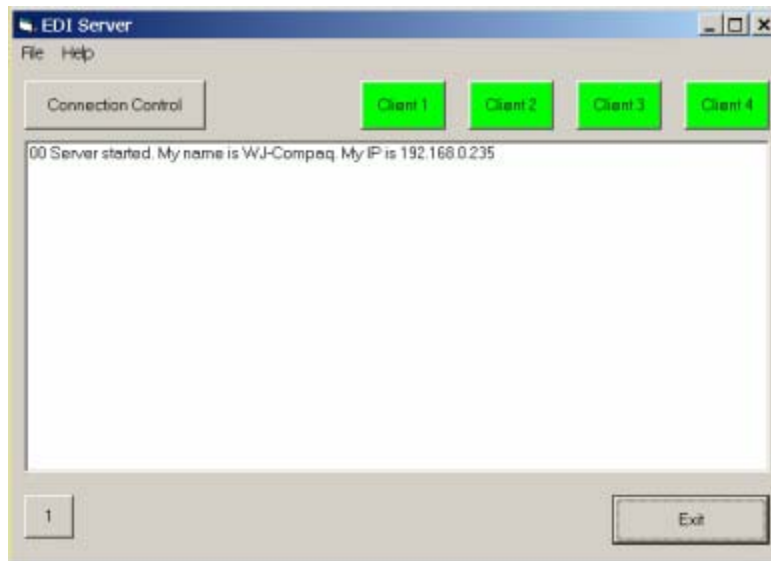


## EDI Server

EDI Editor is also a client of our EDI Server and EDI Database Server. You can connect to EDI Server from an EDI Editor session to validate your document. EDI Server safe stores the incoming messages and generates a positive or negative Functional Acknowledgment back to the client based on the message validation result. The Server and Client communicate via TCP connection over IP.



## EDI Database Server

With EDI Database Server, you can post your EDI documents received from your trading partners to your company internal database. From an EDI Editor session, you can connect to the EDI Database server via TCP/IP connection. Once it is connected, you can post the incoming EDI message to your database based on predefined mappings.